

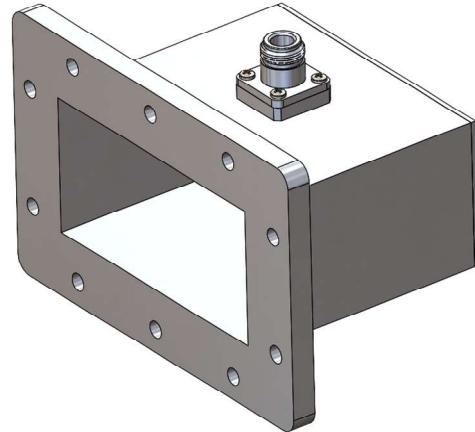
## WR430 to N-type Adapter

### Typical Application

- SATCOM
- Broadcast
- Radars

### Product Features

- 1.72 to 2.61 GHz Frequency Range
- Low Insertion Loss and VSWR
- WR-430 Waveguide with CPR Flange
- N-type Connector
- Compact form-factor
- Easily integrated into existing systems



### Product Description

UBS offers a standard product line of precision rectangular waveguide-to-coax adapters covering waveguide sizes from WR-22 through WR-650.

Our manufacturing process ensures all physical components and product performance are of the highest quality, in order to meet the most rigorous industry standards and clients' demands.

Electrical	
Operating Frequency	1.72 - 2.61 GHz
VSWR	1.2:1 typ.
Impedance	50 Ohms
Power Handling	700W
Operating Temperature Range	-40°C to +85°C

Mechanical	
Body Style	Right Angle
Waveguide	WR-430 with CPR Flange
Connector	N-type Female
Material	Aluminum
Finish	Paint
Dimensions (W x H x L)	6.34" x 4.19" x 4"
Weight	498 g