

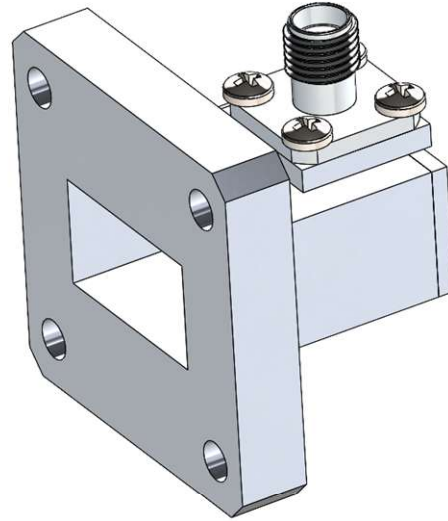
WR62 to SMA-type Adapter

Typical Application

- SATCOM
- Broadcast
- Radars

Product Features

- 11.9 to 18.0 GHz Frequency Range
- Low Insertion Loss and VSWR
- WR-62 Waveguide with COVER Flange
- SMA-type Connector
- Compact form-factor
- Easily integrated into existing systems



Product Description

UBS offers a standard product line of precision rectangular waveguide-to-coax adapters covering waveguide sizes from WR-22 through WR-650.

Our manufacturing process ensures all physical components and product performance are of the highest quality, in order to meet the most rigorous industry standards and clients' demands.

Electrical	
Operating Frequency	11.9 - 18.0 GHz
VSWR	1.2:1 typ.
Impedance	50 Ohms
Power Handling	80W
Operating Temperature Range	-40°C to +85°C

Mechanical	
Body Style	Right Angle
Waveguide	WR-62 with COVER Flange
Connector	SMA Female
Material	Aluminum
Finish	Paint
Dimensions (W x H x L)	1.31" x 1.31" x 1.01"
Weight	22.6 g

(specifications are subject to change without notice)