

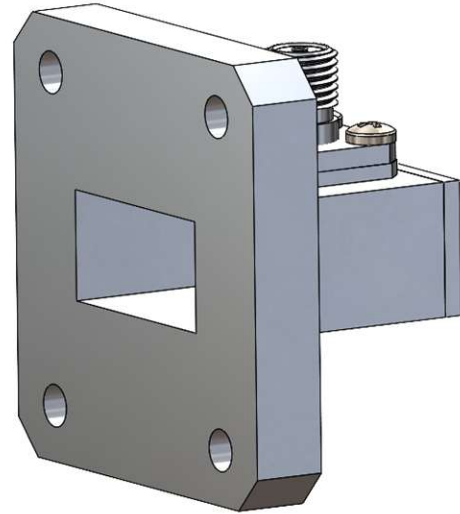
WR75 to SMA-type Adapter

Typical Application

- SATCOM
- Broadcast
- Radars

Product Features

- 9.84 to 15.0 GHz Frequency Range
- Low Insertion Loss and VSWR
- WR-75 Waveguide with COVER Flange
- N-type Connector
- Compact form-factor
- Easily integrated into existing systems



Product Description

UBS offers a standard product line of precision rectangular waveguide-to-coax adapters covering waveguide sizes from WR-22 through WR-650.

Our manufacturing process ensures all physical components and product performance are of the highest quality, in order to meet the most rigorous industry standards and clients' demands.

| Electrical | |
|-----------------------------|-----------------|
| Operating Frequency | 9.84 - 15.0 GHz |
| VSWR | 1.2:1 typ. |
| Impedance | 50 Ohms |
| Power Handling | 350W |
| Operating Temperature Range | -40°C to +85°C |

| Mechanical | |
|------------------------|-------------------------|
| Body Style | Right Angle |
| Waveguide | WR-75 with COVER Flange |
| Connector | SMA Female |
| Material | Aluminum |
| Finish | Paint |
| Dimensions (W x H x L) | 1.5" x 1.5" x 1.01" |
| Weight | 27.2 g |

(specifications are subject to change without notice)