

End Launch Adapter (WG to Coaxial)

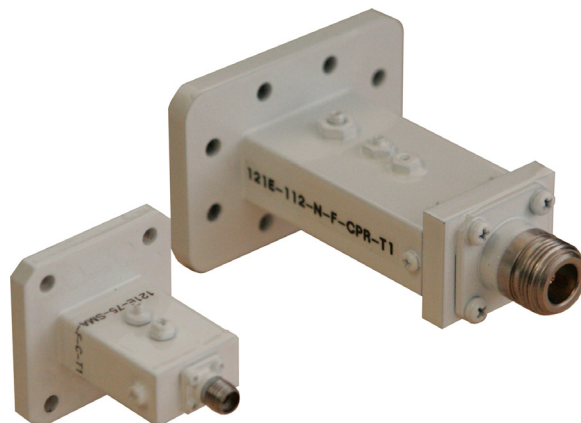
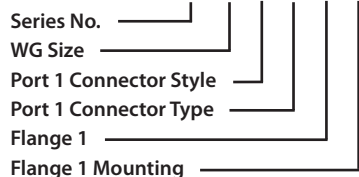
Series No: 121E

Part Description

UBS offers a standard product line of precision rectangular waveguide-to-coax end launch adapters covering waveguide sizes from WR-22 through WR-650.

Ordering Data

Part number - 121E - X - X - X - X - X



Flange Configuration

Flange Type	C - Cover G - Groove CHOKE CMR CPR(F, G)
Flange Mounting Holes	T1 - Through Holes T2 - Threaded A - Alternating

Connector Style

Style	SMA N 2.9 mm (K) 3.5 mm 2.4 mm
Type	M - Male F - Female

Electrical Specification

VSWR	< 1.20 typ.
Insertion Loss	0.2 dB

Specifications

Size	Frequency GHz
WR22	33.00 - 50.00
WR28	26.50 - 40.00
WR34	22.00 - 33.00
WR42	18.00 - 26.00
WR51	15.00 - 22.00
WR62	12.40 - 18.00
WR75	10.00 - 15.00
WR90	8.20 - 12.40
WR112	7.05 - 10.00
WR137	5.85 - 8.20
WR159	4.09 - 7.05
WR187	3.95 - 5.85
WR229	3.30 - 4.90
WR284	2.60 - 3.95
WR340	2.20 - 3.30
WR430	1.70 - 2.60
WR650	1.12 - 1.70

STANDARD FINISH: is electroless corrosion protection for the metal surface. Non standard configurations and finishes (Silver, Nickel, Cadmium plating) are available upon request. Waveguide sizes up to WR-650 available. Other connectors available upon request. Improved VSWR performance available upon request. Contact our sales department with your requirements.

(specifications are subject to change without notice)

www.Uniquesys.com

Head Office: Unique Broadband Systems a DOL Technologies Inc. Company
120 Spinnaker Way, Vaughan Ontario L4K 2P6 | Tel: 905 669 8533 | Toll Free: 1 877 669 8533 | Email: Sales@uniquesys.com