

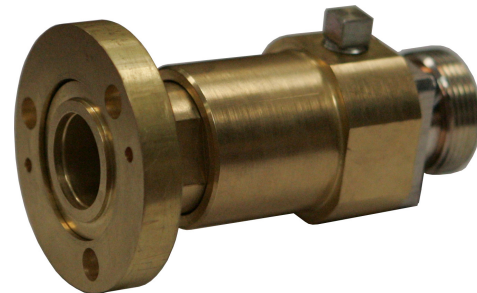
### Part Description

UBS offers a standard line of precision 7/8" EIA, swivel flange, coax adapters for use in rigid and coaxial air-line transmission systems. Each adapter includes an anchor insulator connector, o-ring, hardware and optional 1/8" NPT gas inlet port.

### Ordering Data

Part number - 160 - X - X - X

Series No. \_\_\_\_\_  
 Connector Style \_\_\_\_\_  
 Connector Type \_\_\_\_\_  
 Pressurization \_\_\_\_\_



### Electrical Specification

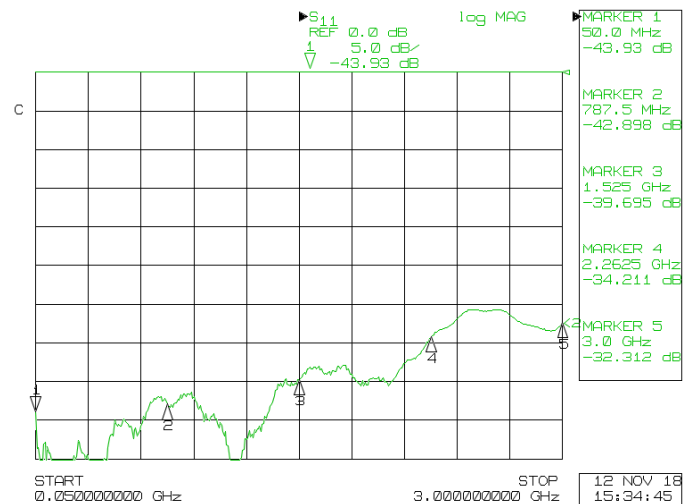
Operating Frequency	0 to 3000 MHz
Insertion Loss	0.05 dB
VSWR	1.10:1 typical
Impedance	50 ohm
Flange	7/8" EIA

### Connector Style

Style	N 7/16 DIN
Type	M - Male F - Female

### Mechanical

Pressurization	P - Pressurized NP - Non-Pressurized
Material	Brass
Finish	Clear irridite



Typical Return Loss (with 7/16 DIN connector)