

# Non-Isolated 0° Waveguide Combiner

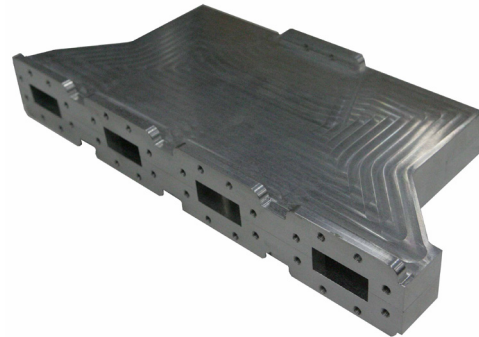
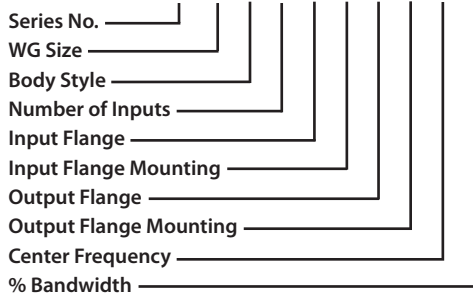
Series No: 150

## Part Description

UBS offers a standard product line of non-isolated 0° in-phase combiners covering waveguide sizes from WR-28 through WR-650. The size and frequency listed in the Specifications table are standard waveguide frequency ranges; actual combiner frequency range is typically 15% of the total bandwidth.

## Ordering Data

Part Number - 150 - X - X - X - X - X - X - X - X - X



## Flange Configuration

<b>Flange Type</b>	C - Cover G - Groove CHOKE CMR CPR (F, G)
<b>Flange Mounting Holes</b>	T1 - Through Holes T2 - Threaded A - Alternating

## C-Band Combiner Specifications

<b>Operating Frequency Range</b>	5.85 to 6.725 GHz
<b>Center Frequency</b>	6.2875 GHz
<b>Common Port Return Loss</b>	25 dB
<b>Insertion Loss</b>	0.2 dB typ.
<b>Flatness</b>	± 0.15 dB
<b>Amplitude Unbalance</b>	0.3 dB
<b>Phase Unbalance</b>	5.5°

## Specifications

Size	Frequency GHz
WR28	26.50 - 40.00
WR34	22.00 - 33.00
WR42	18.00 - 26.50
WR51	15.00 - 22.00
WR62	12.40 - 18.00
WR75	10.00 - 15.00
WR90	8.20 - 12.40
WR112	7.05 - 10.00
WR137	5.85 - 8.20
WR159	4.90 - 7.05
WR187	3.95 - 5.85
WR229	3.30 - 4.90
WR284	2.60 - 3.95
WR340	2.20 - 3.30
WR430	1.70 - 2.60
WR650	1.12 - 1.70

**STANDARD FINISH:** is electroless corrosion protection for the metal surface, plus "Admiralty Gray" epoxy top coat. Non standard configurations and finishes (Silver, Nickel, Cadmium plating) are available upon request.

**NOTE:** WR137 C-Band sample listed; other configuration available. Please contact our sales department with your requirements.